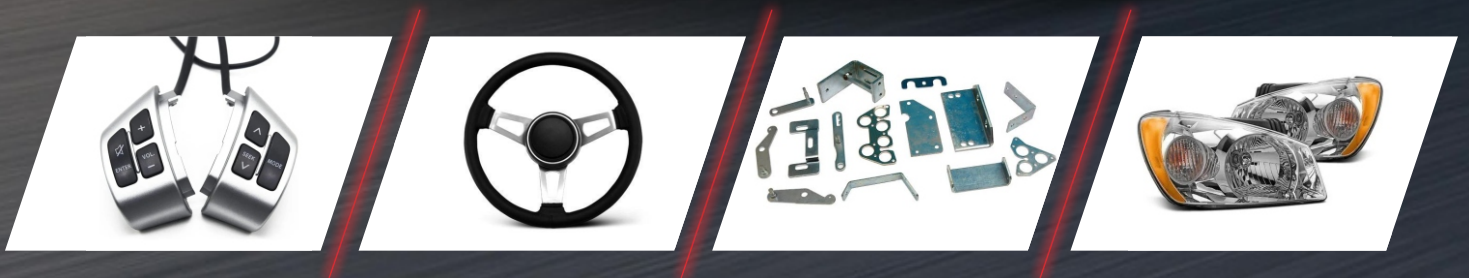




***LIGHT YOUR WAY
AND MAKE A BRILLIANT LIFE***

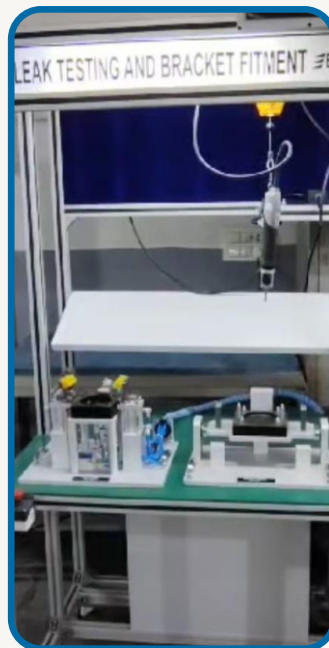
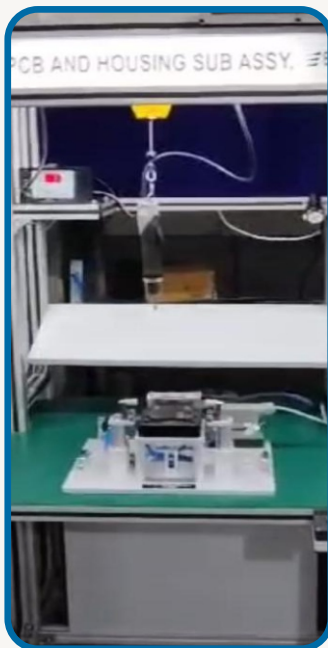


Your Premier Destination for Cutting-Edge
Automotive Solutions

ASSEMBLY LINE



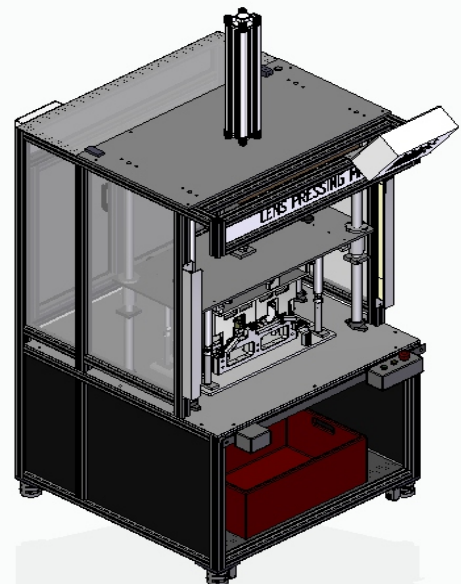
EULER IR HEAD LAMP ASSY. LINE





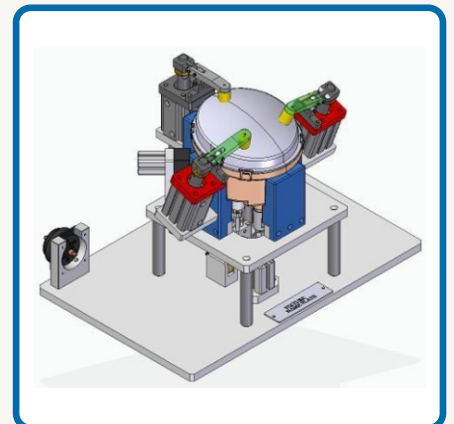
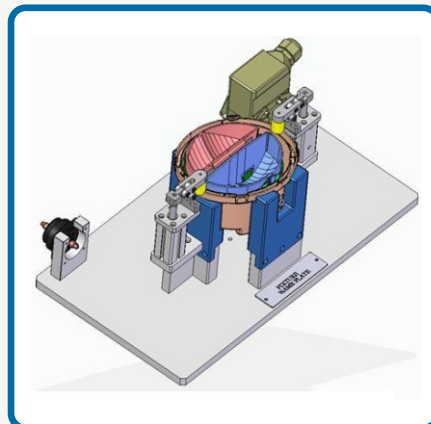
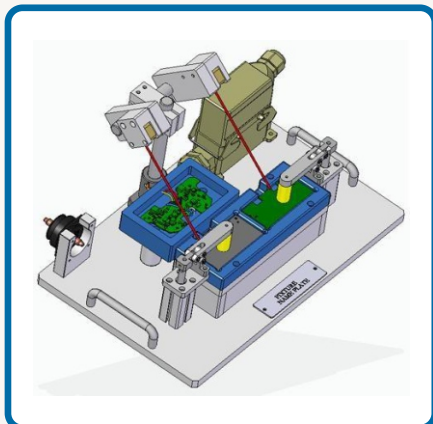
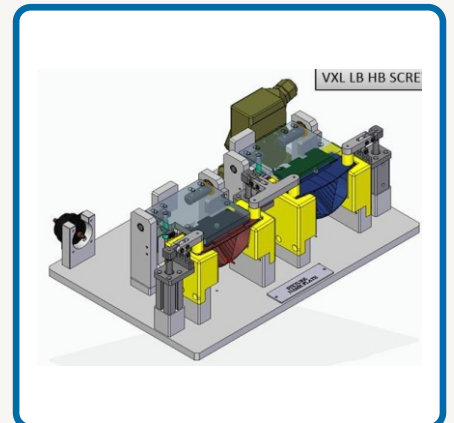
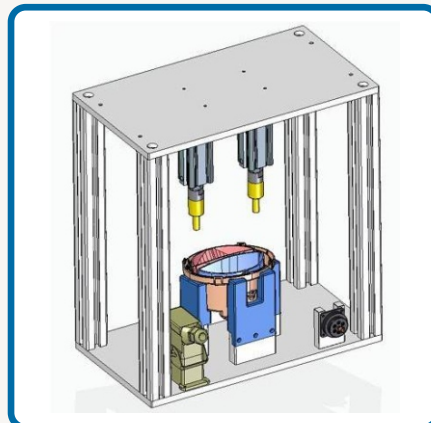
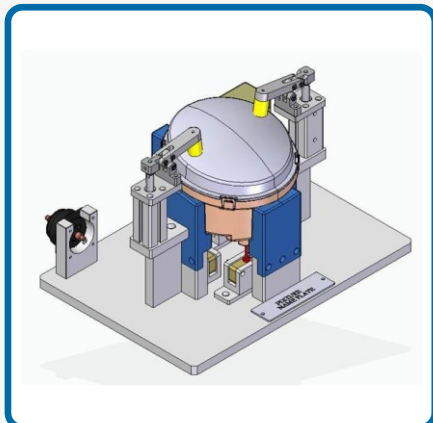
EULER IR HEAD LAMP PDI STATION

MAHINDRA BOLERO HEAD LAMP LENS PRESSING



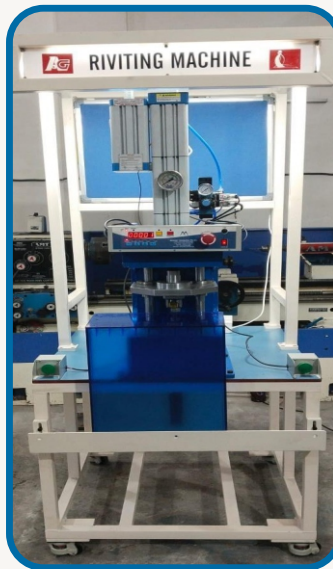


VXL ASSY. FIXTURE





INDIAN RAILWAYS TRAY RIVETING MACHINE



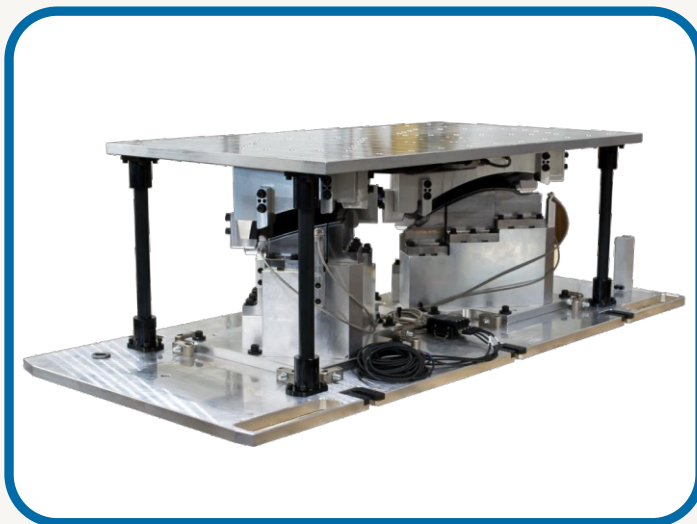
XF-091 TAIL ASSY.FIXTURE



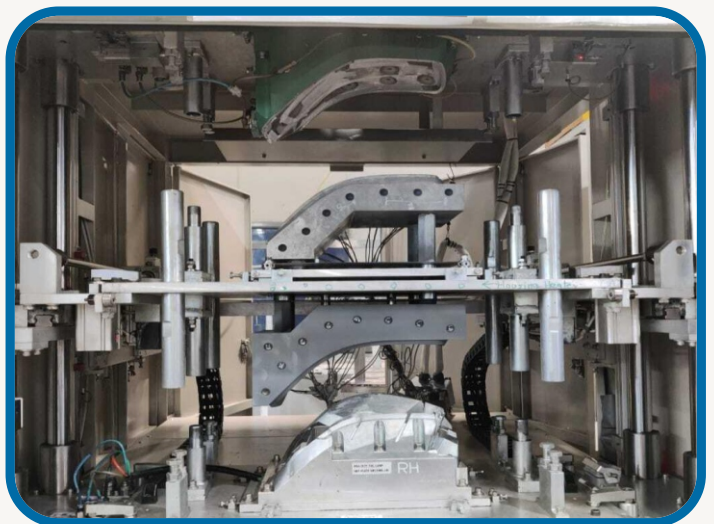
PLASTIC WELDING



TAIL LAMP VIBRATION WELDING TOOL



TAIL LAMP HOT PLATE WELDING TOOL



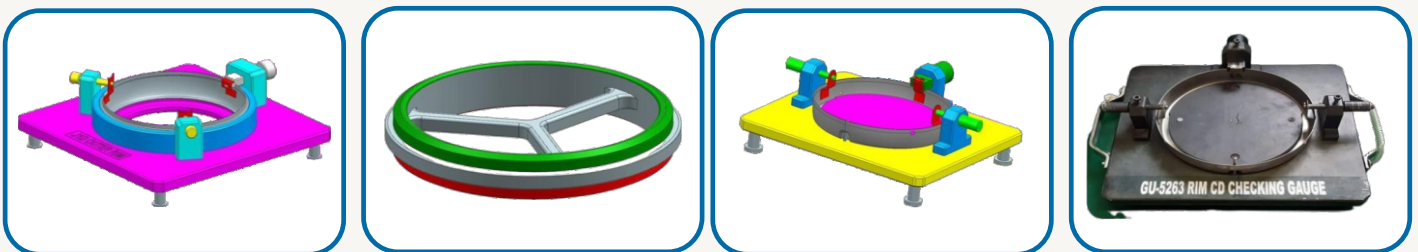
CHECKING GAUGE



SUZUKI TAIL LAMP GAUGE



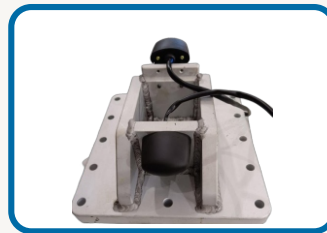
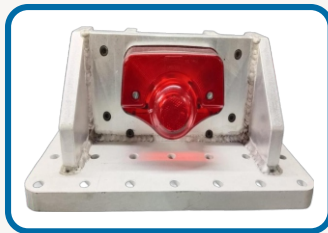
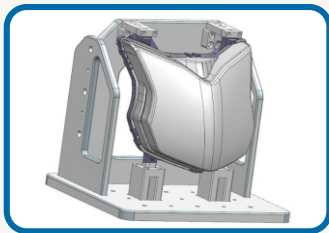
ROYAL ENFIELD RIM GAUGE



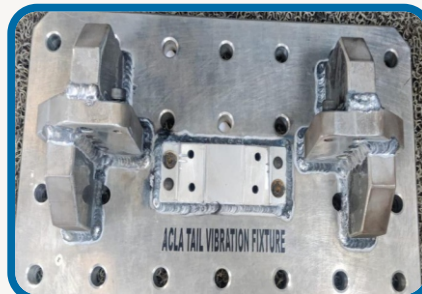
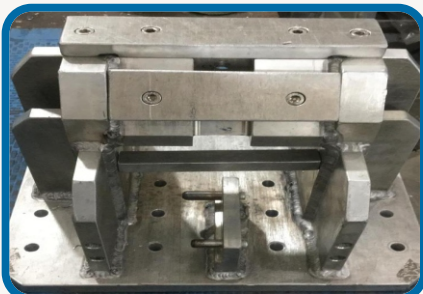
LAB TESTING FIXTURE



HEAD AND TAIL LAMP PHOTOMETRIC FIXTURE

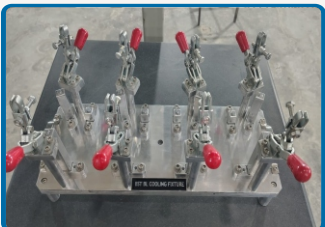
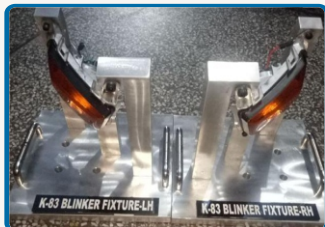
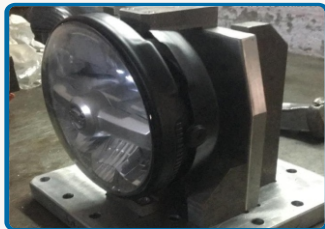


HEAD AND TAIL LAMP PHOTOMETRIC FIXTURE

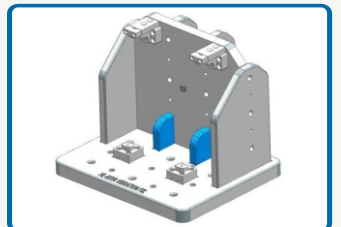
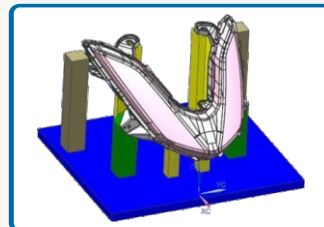
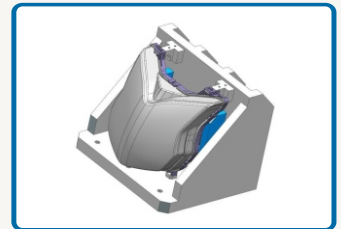
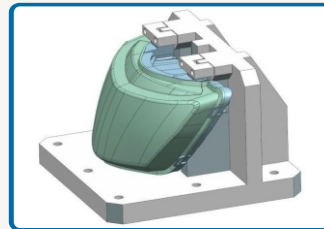
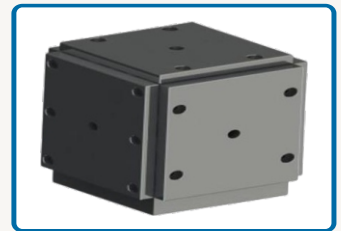
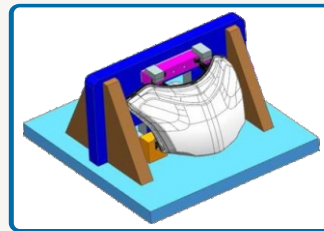




HEAD AND TAIL LAMP PHOTOMETRIC FIXTURE



HEAD LAMP AND TAIL LAMP VIBRATION FIXTURE 3D DESIGN



SURFACE TREATMENT



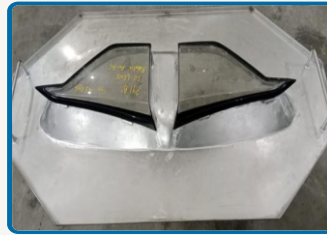
UV HARD COAT AND ANTI-FOG



**HARLEY FOG LENS
ANTI FOG COAT**



BMW LENS HARD COAT



VW LENS ANTI-FOG COAT FIX



**SUZUKI LENS ANTI-FOG
COAT FIX**

ELECTRO FORMING ANTI-FOG SPRAY MASKING FIXTURE



**HEAD LAMP ANTI-FOG CLAMP
NICKEL MOLD SHIELD**



**HEAD LAMP ANTI-FOG FIXTURE
COPPER MOLD SHIELDING**

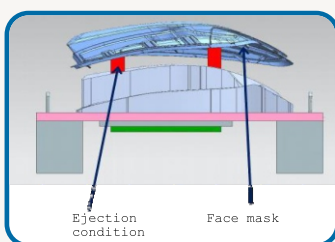
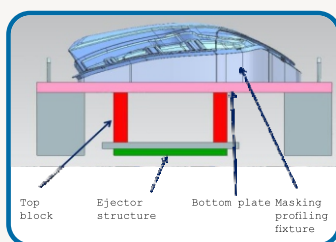


**TAIL LIGHT ANTI-FOG N
ICKEL MOLD**

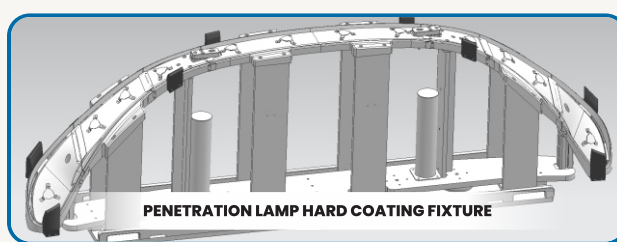




HARD COATING FIXTURE



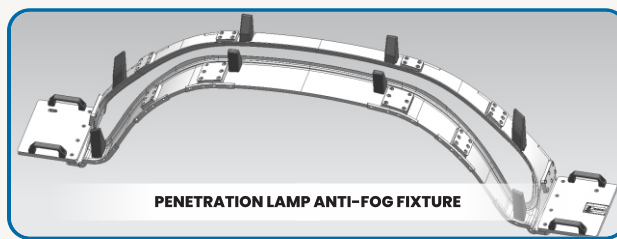
HARD COATING FIXTURE



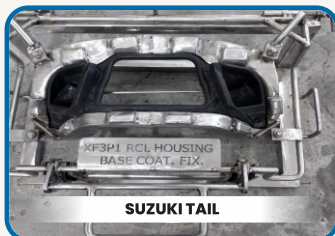
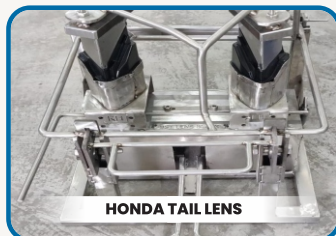
UV HARD COAT & ANTI-FOG FIXTURE



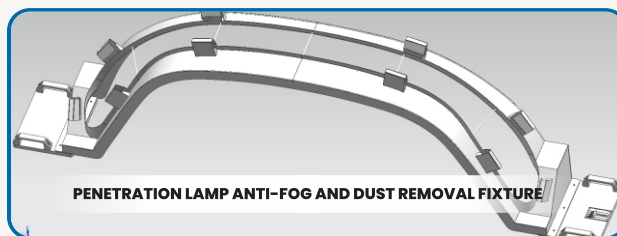
ANTI-FOG SPRAY MASKING FIXTURE(CNC)



MANUAL PAINT MASKING FIXTURE



ANTI-FOG AND DUST REMOVAL FIXTURE(CNC)





ELECTROFORMING SPRAY MASKING FIXTURE



BUICK GRILLE



TOYOTA GRILLE





ELECTROFORMING SPRAY MASKING FIXTURE



HONDA TAIL LENS



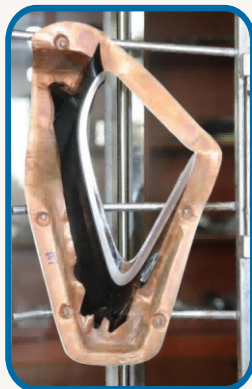
**HONDA HEAD LAMP
BEZEL**



GM TAIL TOP COAT

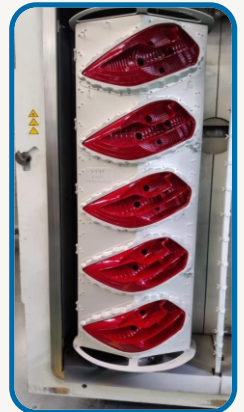


ELECTROFORMING MET ALLIZATION MASKING FIXTURE





METALLIZATION MASKING FIXTURE



HERO W/L

VW T/L

Adopts copper mold upper and lower clamp mold shielding style
(can be single hole disassembly, convenient maintenance, cleaning)



TRIUMPH T/L



TVS H/L



PSA FOG REF



MARUTI T/L BEZEL



PSA REAR FOG



MARUTI T/L





The first photograph shows a blue 'SWITCH ENDURANCE TEST MACHINE' with a digital display, a red 'STOP' button, a green 'START' button, and a yellow 'POWER' button. The second photograph shows a digital display unit with two red LED displays showing '0.0' and '0.000', and a central screen displaying a circuit diagram. The third photograph shows a 'LEAKAGE TESTING PANEL' with a pressure gauge, a blue knob, and three buttons (green, red, and black).

[illegible]

WE ARE BEST

SBV Avtotech is a manufacturing company specialized in Automotive Industries. We provide products with varieties of tooling and Assembly line fixtures, gauge, vibration, photometric, spot welding fixture surface treatment coating and metallization jigs and specific logistic trolleys and workbenches etc.

On providing metalizing jigs, our products have been successfully validated on both domestic and foreign vacuumed metalizing equipment against its specific features, such as Lanzhou Dacheng, Arzuffi SRL, ULVAC, Buhler Leybold Optics, KOVA etc. We have reached best solution to the parts on both horizontal and vertical metallization machines.

PARTIAL PARTNER



**Address: Khasra No. 2649, Near Unique Garden, Jivan Vihar,
Sonipat, Haryana - 131001 (INDIA)**

Phone: +91-9466291291, 9653595333

Wbsite: sbvavtotech.com E-mail: sbvavtotech@gmail.com